

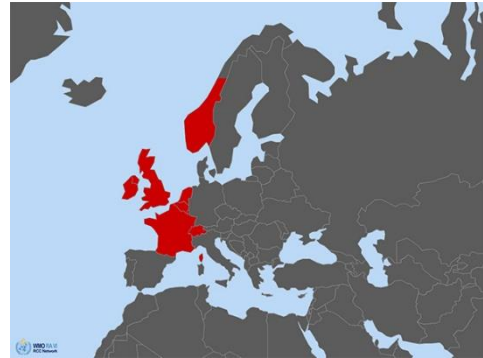
Guidance on above-normal precipitation ID: 202014-i

Area concerned: Ireland, United Kingdom,
France, Switzerland, Luxembourg, Belgium,
Netherlands, southern Norway

**Initial statement issued on 29 September
2020**

Valid:
Begin: 30 September 2020
End: 14 October 2020

To: Climate Watch focal points of NMHS of Ireland, United Kingdom, France,
Switzerland, Luxembourg, Belgium, Netherlands, Norway



The RA VI RCC Network Offenbach Node on Climate Monitoring (RCC Node-CM) is responsible for providing Climate Watch guidance information for NMHSs' own consideration for issuing climate advisories for their territory.

After having consulted the consortium partners of the RCC Node-CM and RCC Node-LRF (RA VI RCC Network Toulouse and Moscow Node on Long-Range Forecasting), RCC Node-CM issues the following guidance information:

Due to the results from monthly forecasts, we expect:

"Above-normal precipitation during the next two weeks in Western Europe, the western Alps and southern Norway with risk of locally heavy precipitation with flooding. Weekly anomalies will be mostly between +10 and +60mm, locally in exposed places above. Weekly totals can exceed 100mm in exposed places. In the second week, anomalies might be lower, but there is still uncertainty. The probabilities are above 90% for the first week, 70-90% for the second week. "

This information should be used as guidance for the National Meteorological and Hydrological Services (NMHS) in a pre-operational mode. It is up to the above-mentioned NMHSs to monitor the status and evolution of the current climate conditions closely and to consider issuing a national Climate Watch Advisory. RCC Node-CM would appreciate feedback from NMHS whether this information was helpful. Also, any suggestion on further pieces of information needed by NMHSs is highly welcomed! A template for a national climate watch advisory can be provided by DWD on request as agreed among the climate watch pilots and RCC Node-CM.

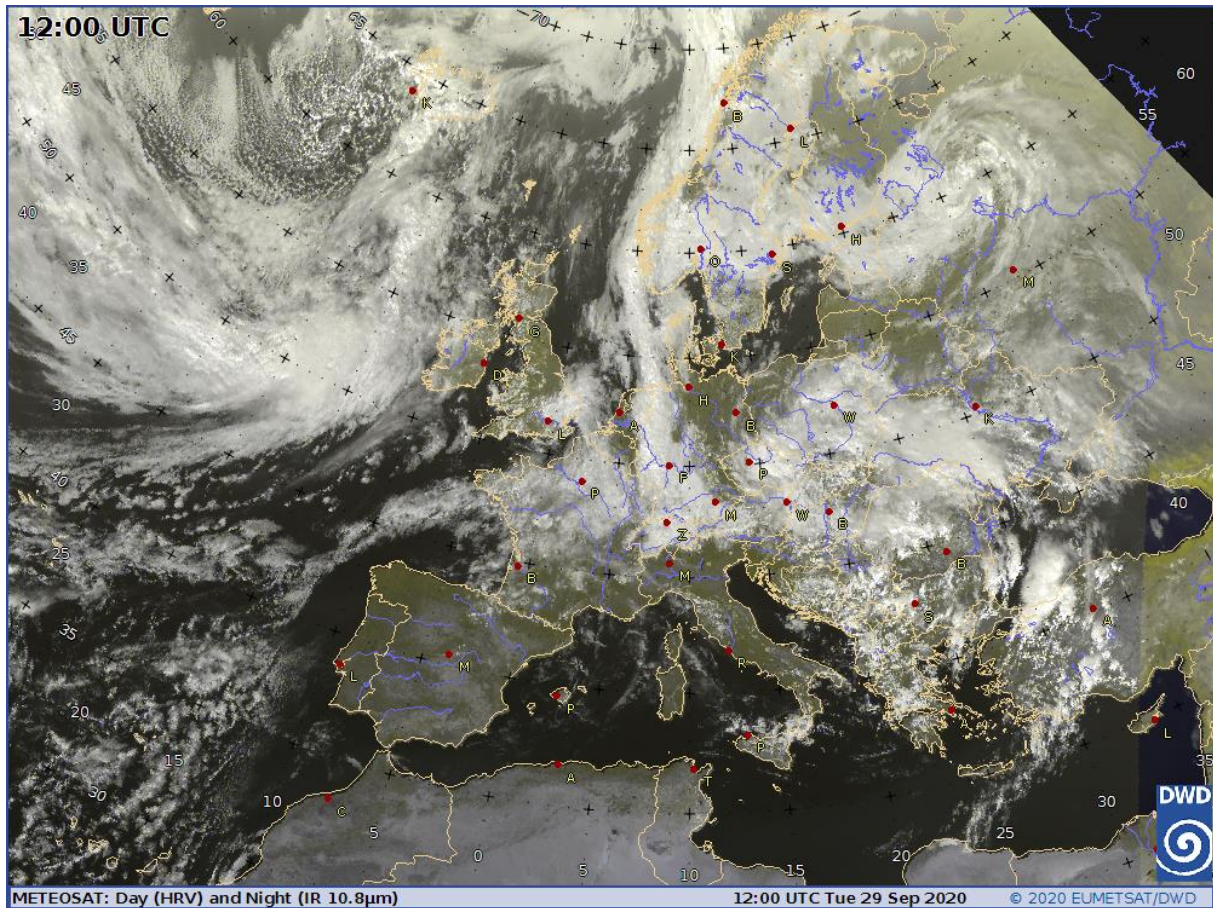
Please note that further information can be obtained from RCC Node-CM website (<https://rcccm.dwd.de>) concerning Climate Monitoring and from RCC Node-LRF websites (<http://seasonal.meteo.fr>, <http://neacc.meteoinfo.ru/forecast>) concerning Long-Range Forecast or by e-mail to rcc.cm@dwd.de or rcc-lrf-mf@meteo.fr.

For ECMWF member's further information on monthly forecasts after logging in is provided at <http://www.ecmwf.int/> ->Forecasts

We will monitor the evolution of the anomaly, issue updates if significant change arise and close the advice when no clear signal can be detected in the forecasts.

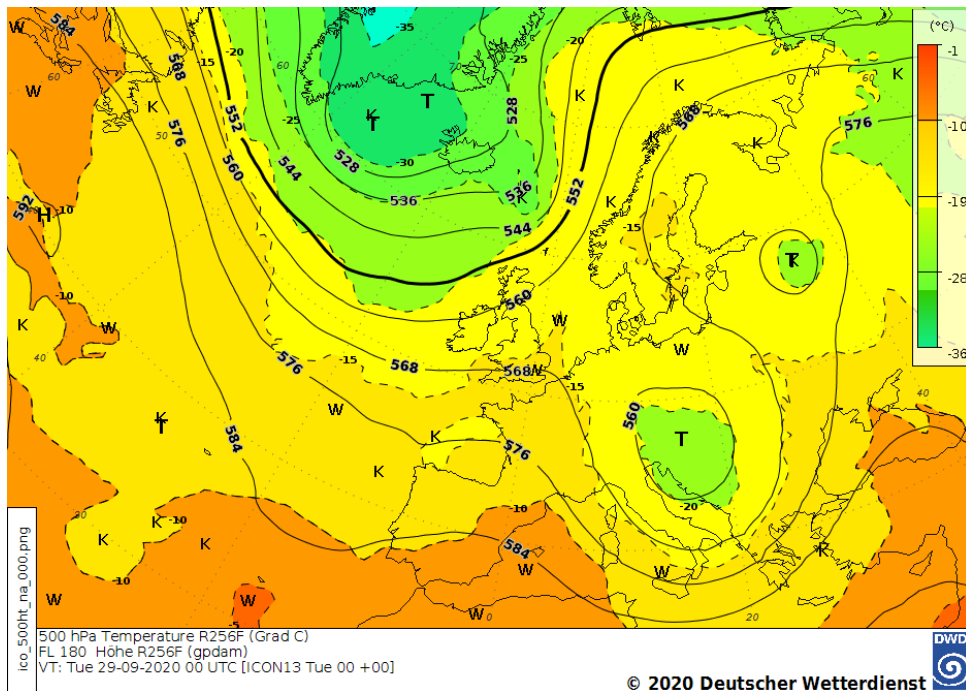
On behalf of the RCC Node-CM Team

Supplementary material

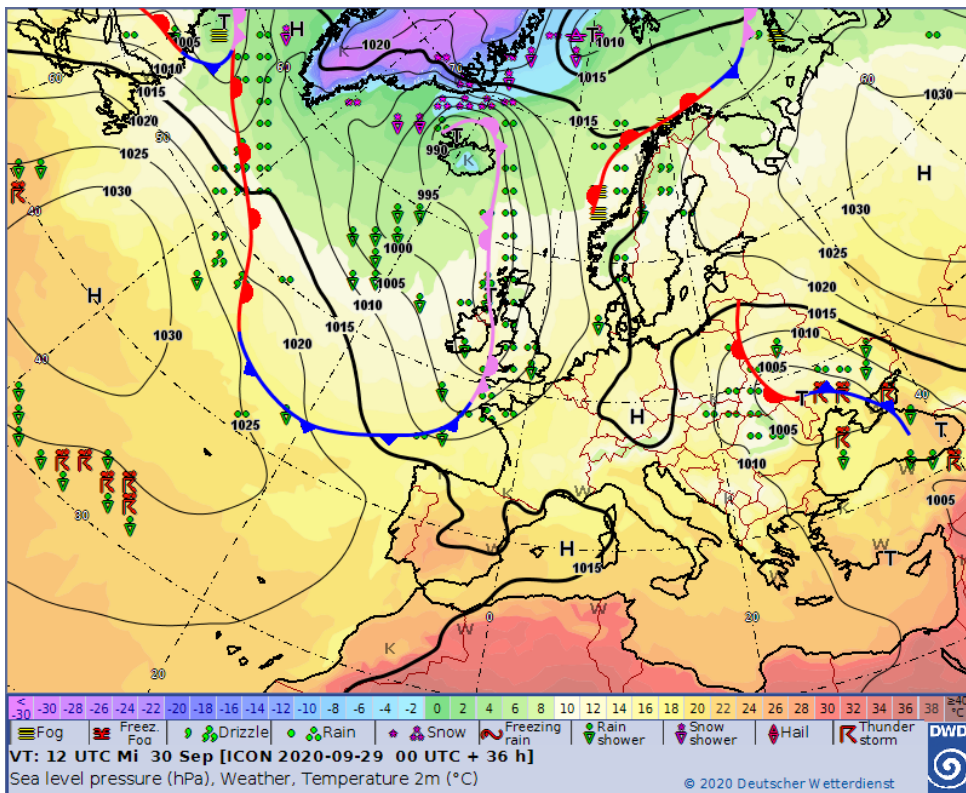


Meteosat satellite image 29 September 2020, 12 UTC. Source: DWD

Climate Watch Advisory

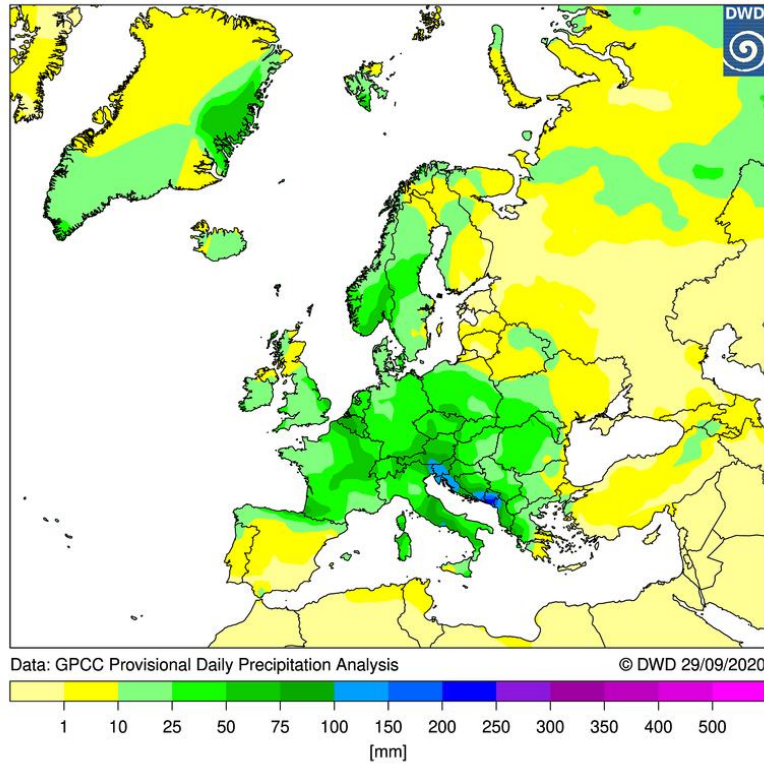


500-hPa chart, 29 September 2020, 00 UTC. Source: DWD

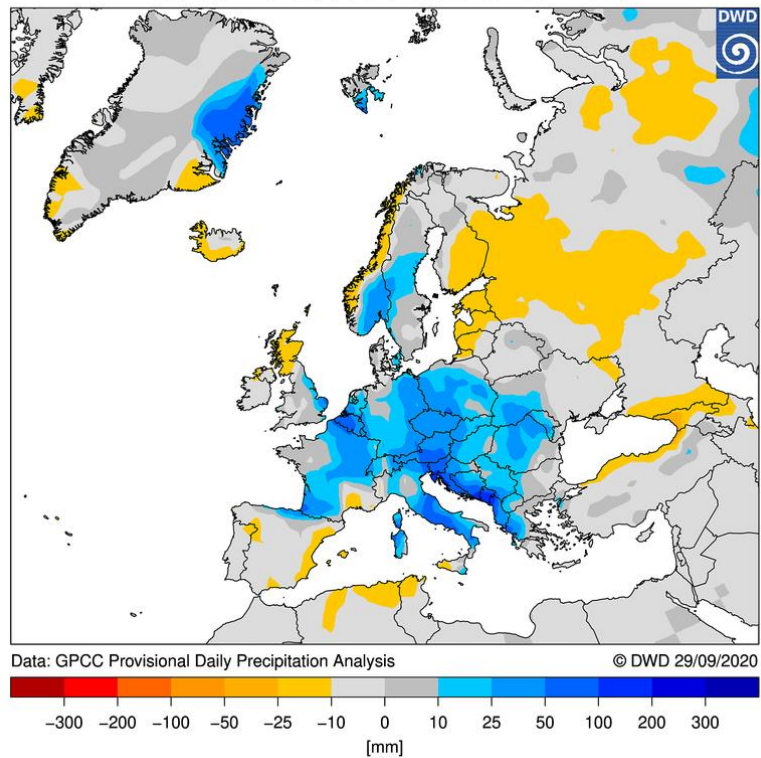


Forecast chart for 30 September 2020, 12 UTC, Source: DWD,
https://www.dwd.de/EN/ourservices/hobbymet_wcharts_europe/hobbyeuropecharts.html

Precipitation 22 September 2020 – 28 September 2020
7-Day Totals



Precipitation 22 September 2020 – 28 September 2020
Absolute Anomaly (reference period 1982–2010)



Weekly precipitation totals and anomalies of the recent week. Source: DWD